



Manpower Supply   Equipment Rental   Logistics



An aerial photograph of a large-scale construction project, likely a highway or major road. The scene is captured during the "golden hour" of sunset, with long, dramatic shadows cast across the dirt and gravel surfaces. Several yellow excavators are positioned at various points along the road, some with their hydraulic arms raised. Large yellow trucks, possibly dump trucks or haulers, are also visible, some parked and others in motion. The road curves through the landscape, bordered by construction barriers and temporary fencing. In the background, some industrial or commercial buildings are visible under the dimming light. The overall atmosphere is one of intense activity and large-scale engineering.

**EMPOWERING YOUR PROJECTS WITH RIGHT TOOLS AND TALENT**

NASCO is committed to Empowering your Projects With Right Tools And Talent, grounded in the foundations we lay. We go beyond conventional boundaries to create a legacy defined by exceptional excellence in every project we undertake.



# About Us

Established in 2010, NASCO has emerged as a key player in the fields of Equipment Rental and Logistics services. The company is committed to providing comprehensive solutions to meet the dynamic needs of various industries. NASCO stands out for its expertise and reliability in delivering quality services across its specialized sectors.

EMPOWERING YOUR PROJECTS WITH RIGHT TOOLS AND TALENT

## CEO Message

Leading a team characterized by excellence, integrity, and innovation, our unwavering focus on safety, quality, environment and reliability is the cornerstone of every project we undertake. Together, we move forward, dedicated to sustained growth and meaningful contributions to the industry.

## Vision

Our vision is to pioneer innovation and sustainability, setting the benchmark for excellence in our industry.

Grounded in integrity and collaboration, we empower our team to exceed client expectations. By embracing responsible practices and transformative solutions, we aim to drive positive change and make a lasting impact.

## Mission

Achieve operational excellence, trust and reliability, earning the respect of customers, stakeholders and communities.

Uphold superior quality and safety standards in all operations.

Adhere to fair, transparent and ethical practices in interactions with all stakeholders.

Cultivate a culture of teamwork, continuous learning and employee empowerment to create a fulfilling and growth-oriented work environment.



## Partnership and Collaboration

We highly value partnership and collaboration, working closely with clients as trusted advisors and partners to achieve mutual success.

## Quality Assurance

We uphold rigorous quality assurance standards throughout every stage of project delivery, ensuring that deliverables meet & exceed industry benchmarks.

## Cost-Effective Solutions

We provide cost-effective solutions without compromising on quality, assisting clients achieve their goals within budget.

# Why NASCO?

## Sustainability and Responsibility

We prioritize sustainability and social responsibility in its operations, implementing environment friendly practices and giving back to the community.

## Comprehensive Services

We offer a wide range of comprehensive services, providing clients with end-to-end solutions that address all their needs from concept to completion.

## Risk Management

We are skilled in risk management, identifying potential risks and implementing strategies to mitigate them, ensuring projects are completed smoothly and successfully.

# Divisions



**EQUIPMENT RENTAL**



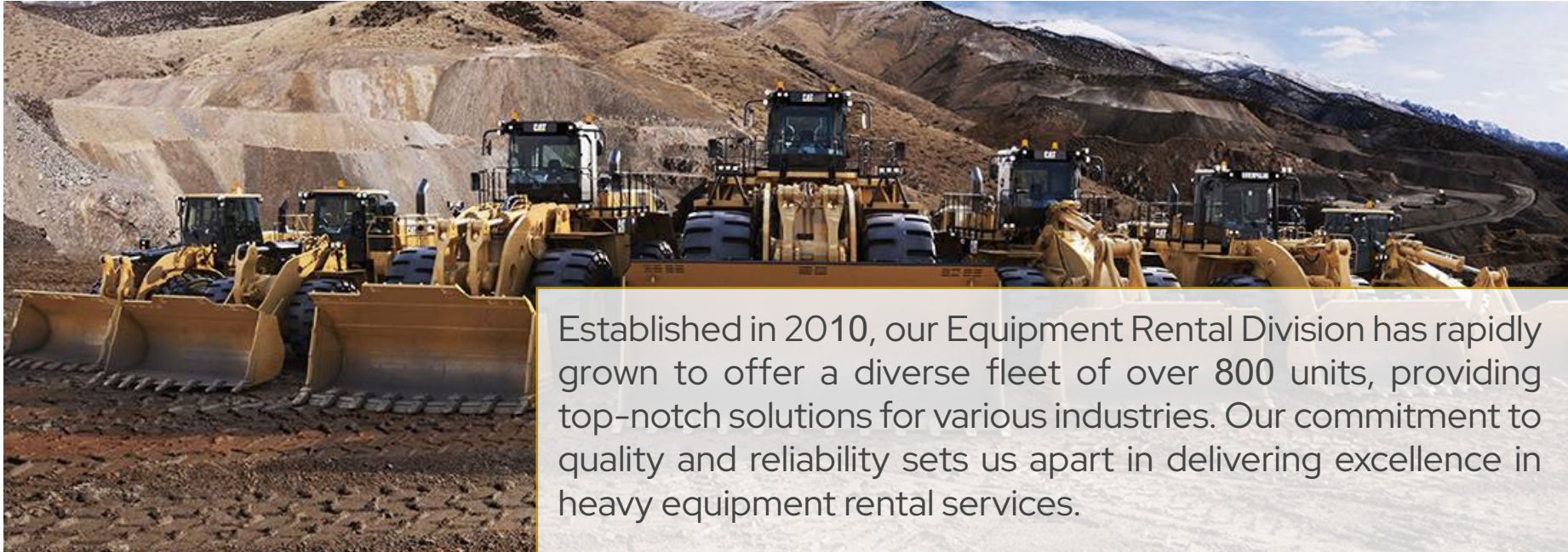
**MANPOWER SUPPLY**



**LOGISTICS**



# Equipment Rental



Established in 2010, our Equipment Rental Division has rapidly grown to offer a diverse fleet of over 800 units, providing top-notch solutions for various industries. Our commitment to quality and reliability sets us apart in delivering excellence in heavy equipment rental services.

## Comprehensive Fleet

Diverse fleet with specialized tools meets project needs, from heavy machinery to precise construction equipment.

## Commitment to Maintenance

Proactive inspections, preventive care, skilled technicians, latest technologies, stringent safety standards, minimal downtime.

## Industry-Leading Expertise

Years of expertise, dedicated professionals, committed to excellence from consultation to on-site support, exceeding client expectations.

## Advantage

Aramco-certified equipment and operators ensure quality, compliance, and efficiency for project execution.

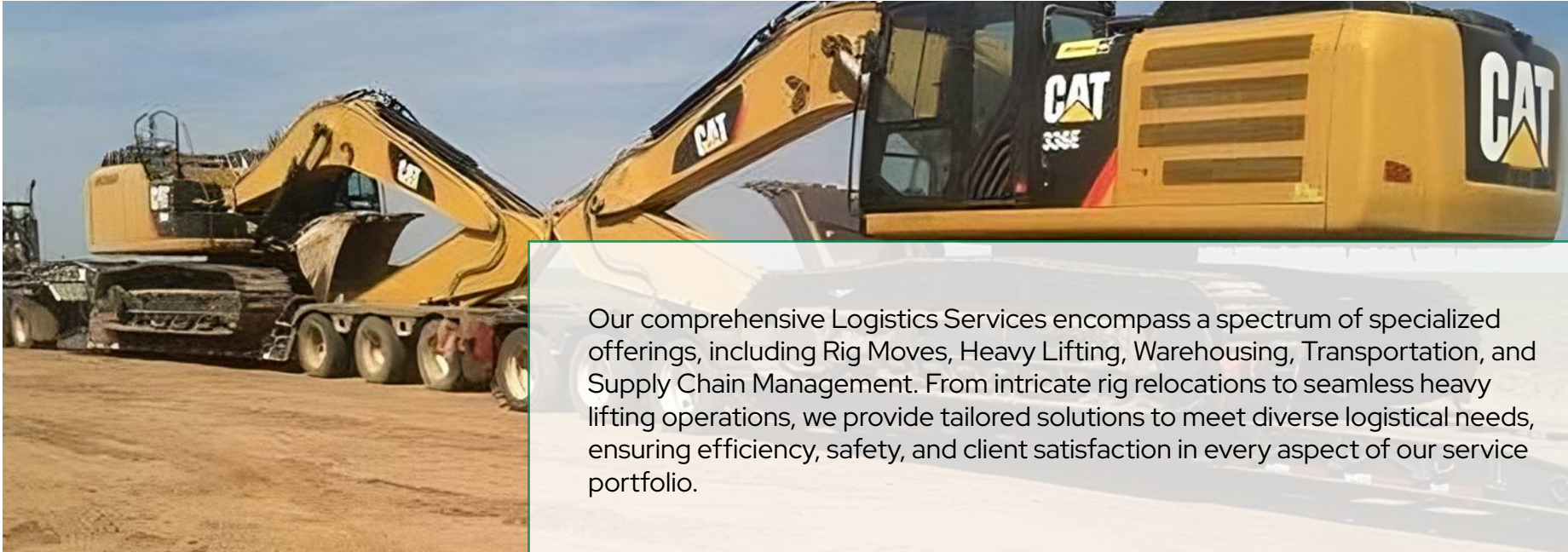


# Equipment Range





# Logistics & Heavy Lifting



Our comprehensive Logistics Services encompass a spectrum of specialized offerings, including Rig Moves, Heavy Lifting, Warehousing, Transportation, and Supply Chain Management. From intricate rig relocations to seamless heavy lifting operations, we provide tailored solutions to meet diverse logistical needs, ensuring efficiency, safety, and client satisfaction in every aspect of our service portfolio.



DEMAG Crawler Crane



Offloading 145T RT Crane



Heavy Transportation

## Owned Facilities

Facilities at NASCO are extensive in magnitude and full-fledged in nature. NASCO facilities have the capability to take on any prodigious project.



**10,000+** Sq. M.  
Laydown, AL AHSA



**800+**  
Equipments



**500+**  
Manpower



**100+** Sq. M.  
Head Office  
KSA



# Our Clients

TRUST - TRANSPARENCY - COST EFFICIENCY - INFRASTRUCTURE

## QUALITY ASSURANCE & QUALITY CONTROL POLICY

NASCO is committed to ensure Quality compliance to the client requirements with regard to fitness for use, performance, safety & reliability of the products and services to be supplied to client, through implementation of an efficient Quality Management System.

At NASCO, QUALITY is at the center of our day-to-day operation, and our goal is to embrace sound QUALITY practices in every activity, projects and location.

We at NASCO strive to fulfil our responsibilities and obligations towards our people, our customers, our partners, our suppliers, our communities and all the stakeholders by committing to the following values.

- Identify, understand, and meet our customers needs, focus on customer satisfaction, and implement improvements to increase their trust.
- Identify innovative customized solutions aiming to bring added value solutions to our customers while optimizing cost.
- Implement risks and opportunities methods to manage processes and projects for continues performance improvement.
- Deliver products, system and services to the required quality, on-time and within budget meeting our customer's requirements by acting proactively in every situation.
- Take leadership and commitment for our work at all organizational levels.
- Support and engage our people at all levels in a relentless drive to improve performance in delivering projects and services.
- Continually improving the effectiveness of our adopted Quality Management System in accordance with ISO 9001:2015.
- Increase the motivation and skills of our people through training and development initiatives.
- Develop lean and consistent processes to continually enhance projects and service delivery across our field of operation.
- Leverage our partners and suppliers' strength to improve our business from design through product delivery, installation, and operation.

## HEALTH, SAFETY & ENVIRONMENT POLICY

At NASCO we are committed to protecting the health, safety, and well-being of all employees, contractors, visitors, and the environment. Our goal is to prevent accidents, injuries, and environmental harm through effective risk management and continuous improvement. We follow the principles of OHSMS ISO 45001:2018 (Occupational Health & Safety) and EMS ISO 14001:2015 (Environmental Management) to achieve these objectives.

### OUR COMMITMENTS:

- Legal Compliance: Comply with all applicable HSE laws, regulations, and industry standards.
- ISO Integration: Implement and maintain HSE systems aligned with ISO 45001 and ISO 14001.
- Risk Management: Identify, assess, and control risks to prevent injuries and environmental harm.
- Training & Awareness: Provide regular HSE training, ensuring all workers are competent and informed.
- Incident Reporting: Promptly report and investigate incidents and near misses to prevent recurrence.
- Environmental Responsibility: Minimize environmental impact by managing waste, emissions, and resource consumption effectively.
- Emergency Preparedness: Maintain and test emergency response plans regularly.

### ROLES & RESPONSIBILITIES:

- Management: Provide leadership, resources, and accountability to ensure HSE performance.
- Supervisors: Enforce safe practices and monitor activities on-site.
- Employees & Contractors: Follow HSE rules, use PPE, and report hazards or incidents immediately.

We are committed to fostering a safety-first culture and environmental stewardship. Everyone in the company shares the responsibility for achieving a safe, healthy, and sustainable work environment.



# An Ambitious Nation

## KINGDOM OF SAUDI ARABIA

The Modern Cradle of Ancient Wonders

Saudi Arabia is a country of wild, untouched beauty. Rich in history yet buzzing with change, it has plenty to offer international visitors. As an emerging destination, the country is full of surprises. Saudi Arabia is one of the largest country in the world with stunning coastline and a history that stretches back to the dawn of human civilization.



RIYADH  
KINGDOM OF SAUDI ARABIA  
EXPO 2030

رؤية  
2030  
المملكة العربية السعودية  
KINGDOM OF SAUDI ARABIA



WORLD  
EXPO



## NIBRAS AL SAHAB CONTRACTING EST (NASCO)

📍 Hassan Abdullah, Al Iskan 1st Dist., Al Hafuf, P.O – 36442, Kingdom of Saudi Arabia

[WWW.NASCO-KSA.COM](http://WWW.NASCO-KSA.COM)

